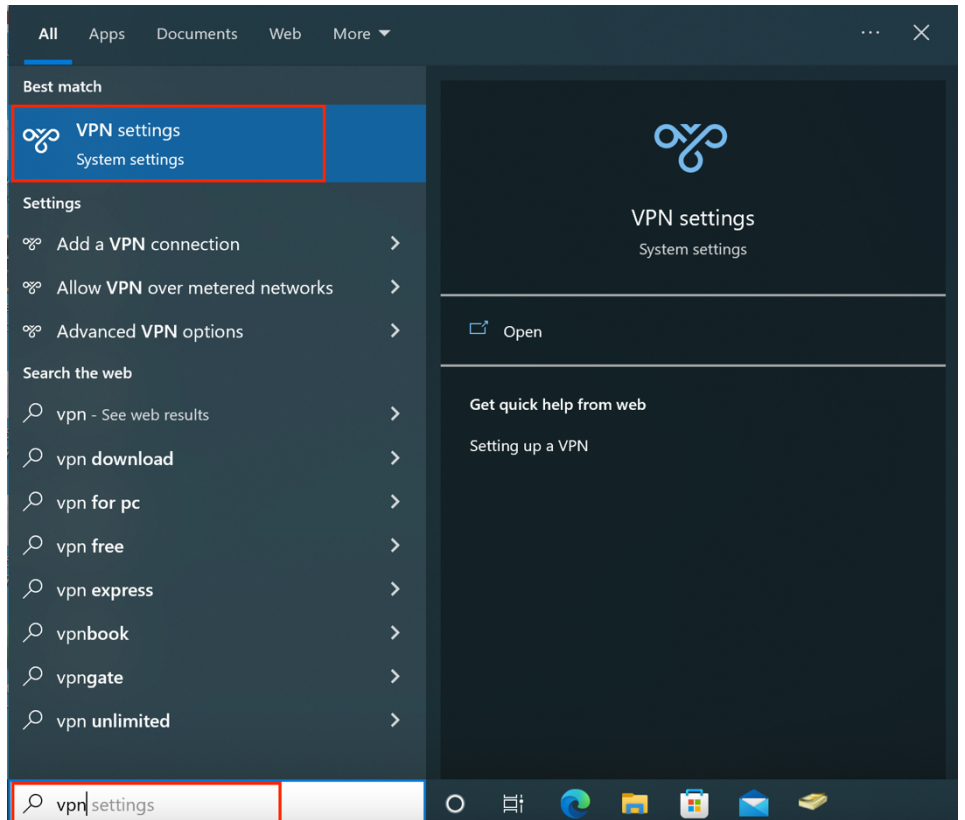
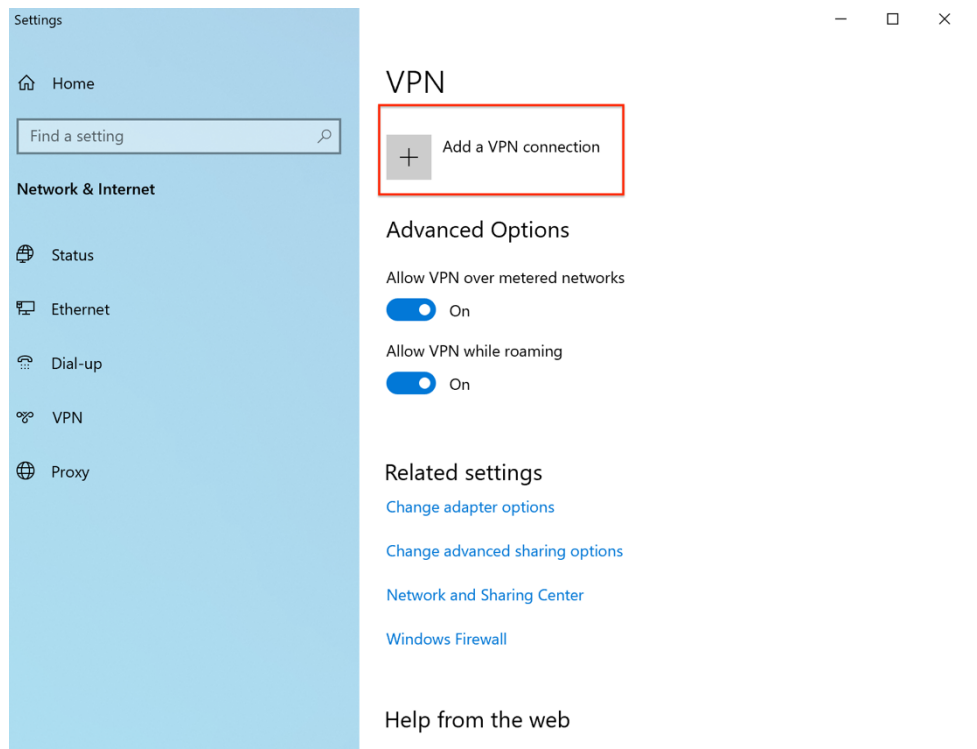


Connect to VPN: Windows/PC

Step 1) Open the **Start Menu** and type/search **VPN**



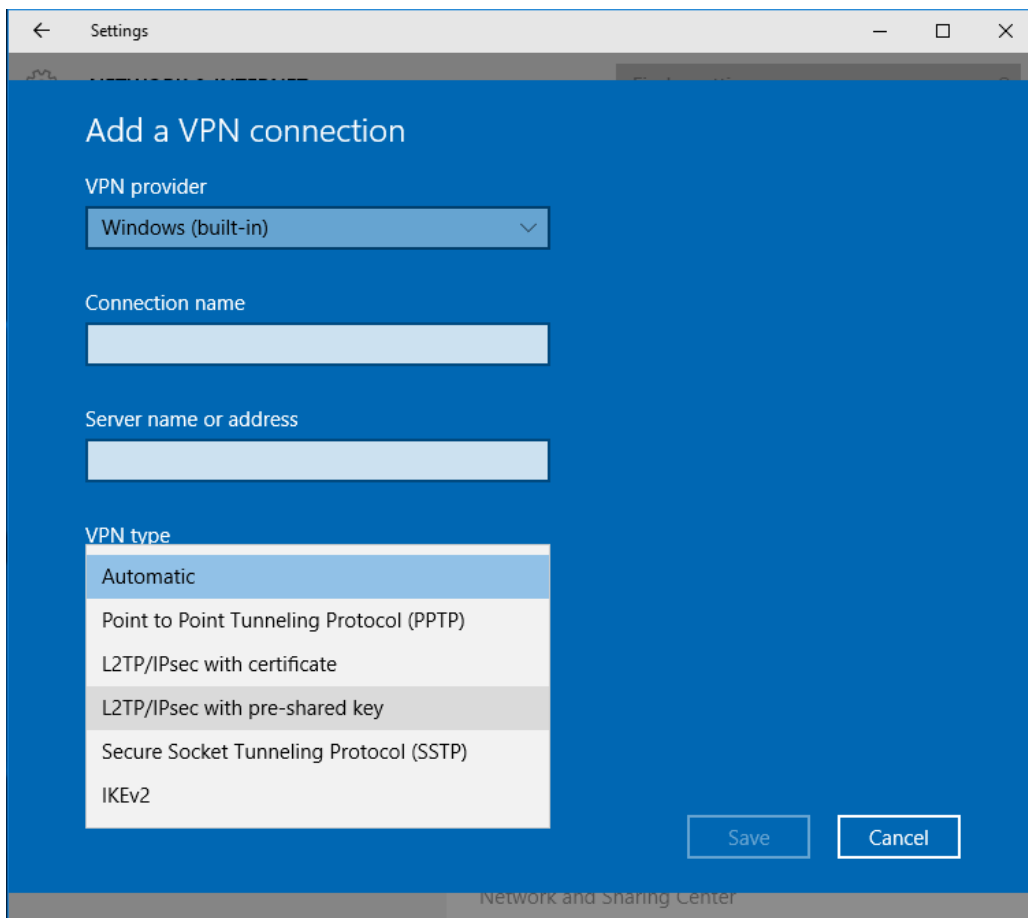
Step 2) Click **Add a VPN connection**.



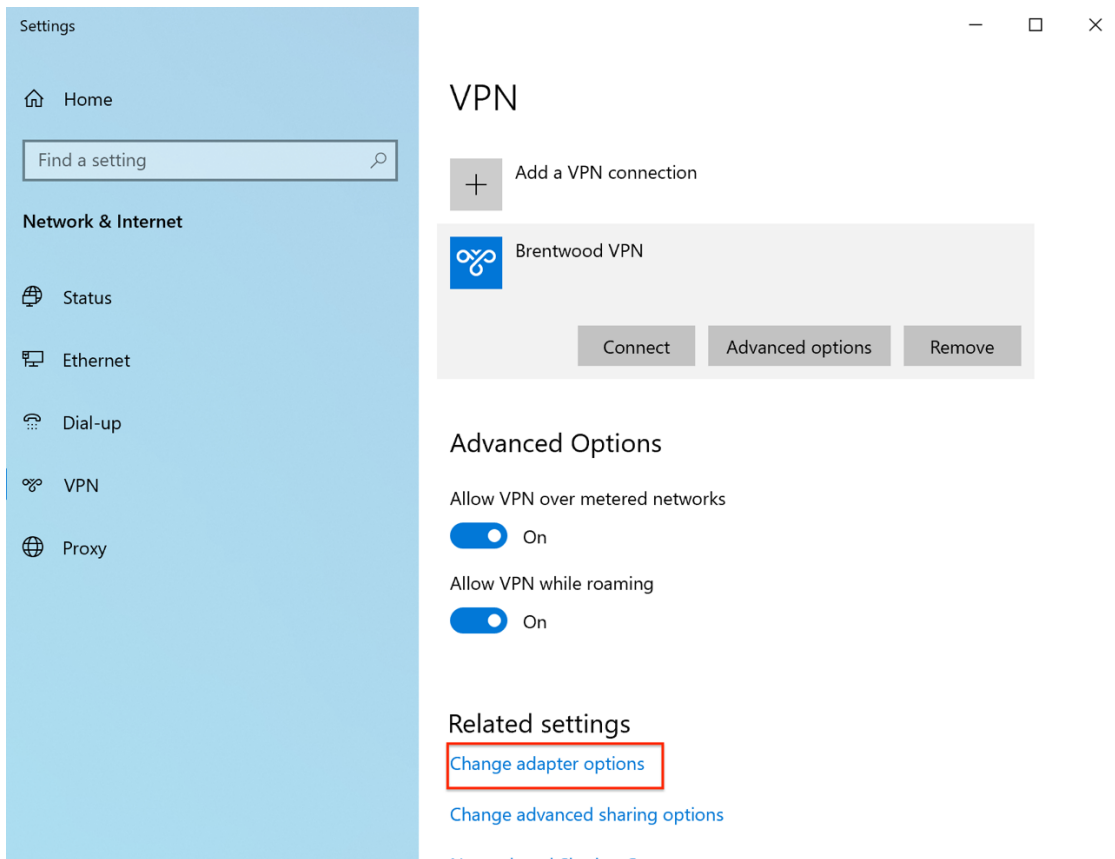
Step 3) In the **Add a VPN connection** please ensure the following:

- **VPN provider:** Set to Windows (built-in)
- **Connection name:** Brentwood VPN
- **Server name or address:** gw.bwscampus.com
- **VPN type:** Select **L2TP/IPsec** with preshared key
- **Preshared Key:** BWSvpn90049
- **User name and Password:** Enter your credentials

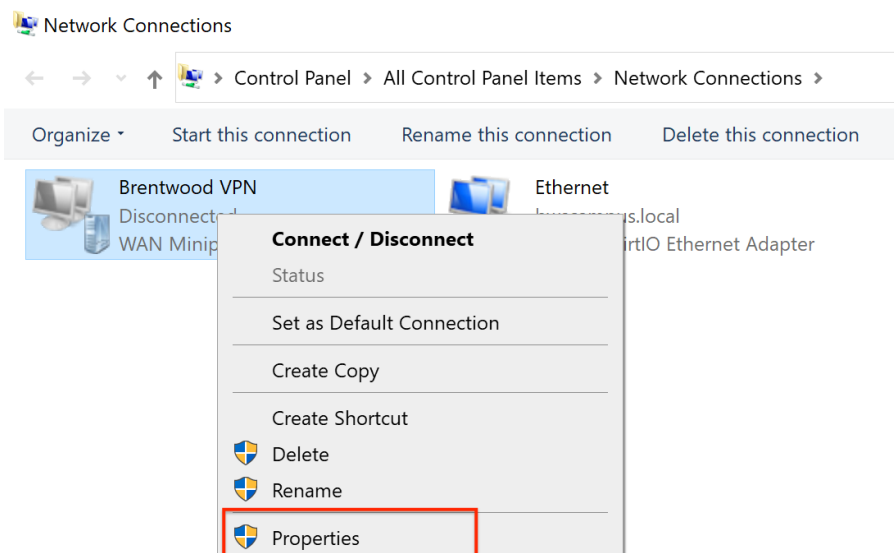
Press **Save**.



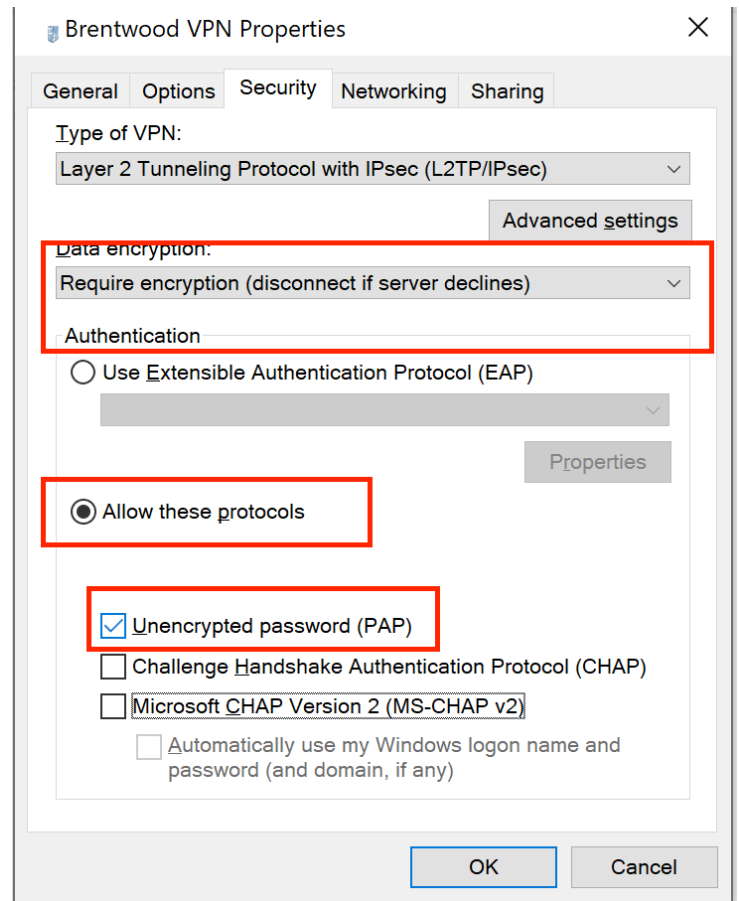
Step 4) After the VPN connection has been created, click **Change adapter options** under **Related settings**.



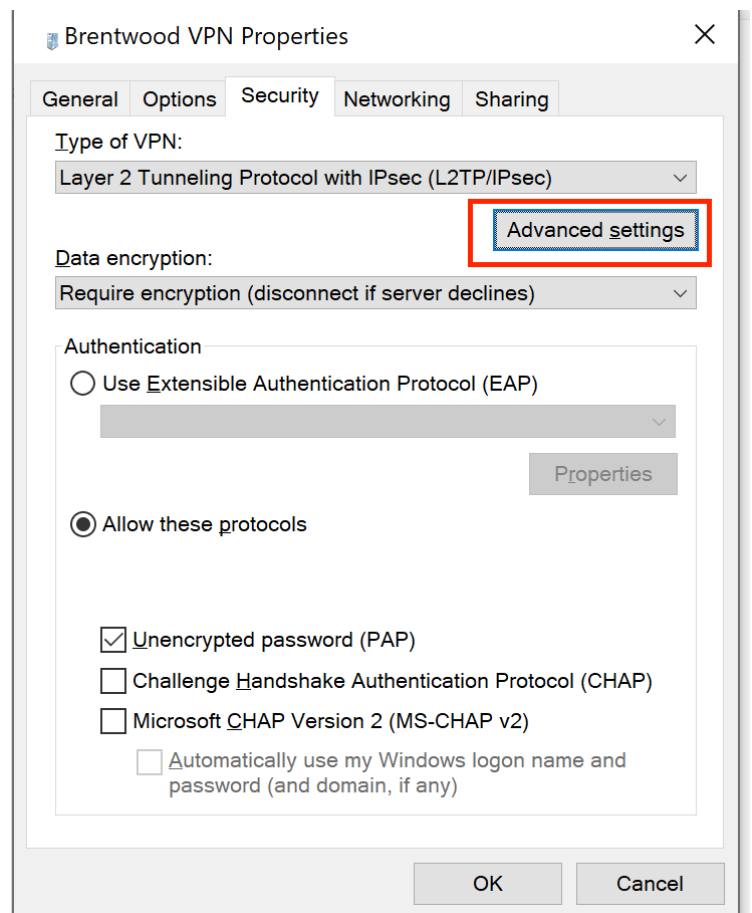
Step 5) Right-click on **VPN Connection** from the list of adapters and click **Properties**



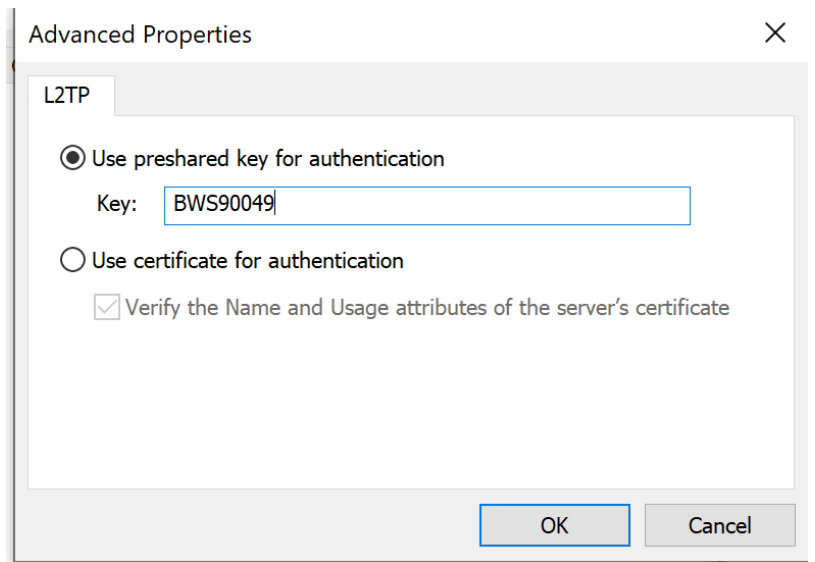
Step 6) In the **Security** tab, select **Require encryption (disconnect if sever declines)**. Then, select **Allow these protocols** under **Authentication**. From the list of protocols, check **Unencrypted password (PAP)**, and uncheck all other options.



Step 7) Click on **Advanced settings**.

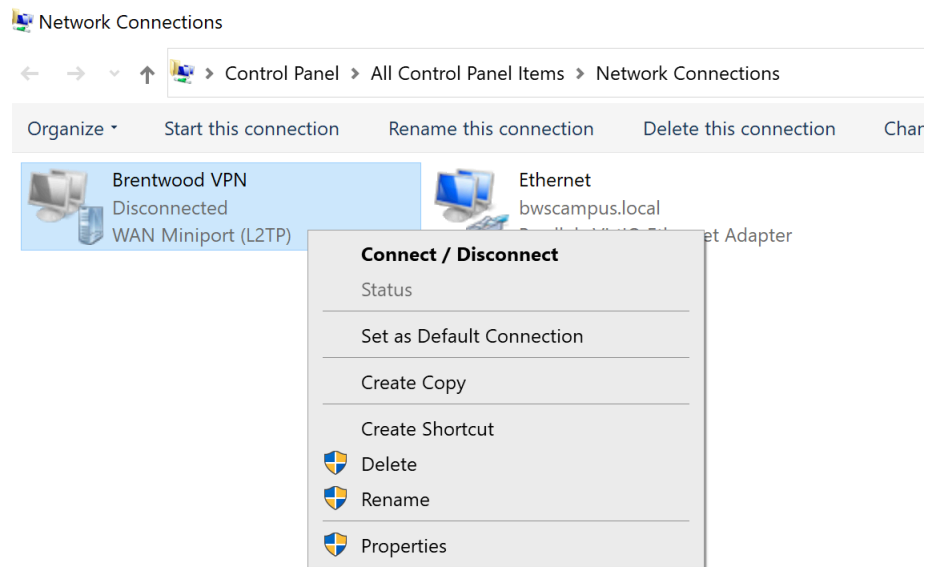


Step 8) In the **Advanced Properties** select the **Use preshared key for authentication** and enter the preshared key: BWS90049



Step 9) Back at the **Network Connections** window, right-click on the **VPN connection** and click **Connect / Disconnect**.

Find your VPN profile and click **Connect**.



Step 10) Enter your username and password. Click **OK**.

